

## Smart Touchscreen Weighing Innovation Meets Durability



**Easy operation, superior quality, intelligent and reliable: FreshBase Plus is the new generation of retailing scales that integrate with identification, weighing and printing. It's an exceptional choice to the retailers who are looking to move into the performance class of convenient touchscreen weighing.**

Adhering to the product philosophy of rapid weighing, steady reliability, rugged durability, and innovative technology, also combined with MT's self-developed weighing application, FreshBase Plus brings convenient weighing services to sales counters, pre-packing and self-service weighing areas. FreshBase Plus provides intelligent weighing solutions for various departments in comprehensive retailers.

**METTLER TOLEDO**

# FreshBase Plus

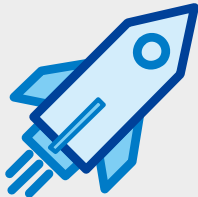
Reliability rooted in heritage; innovation tailored to your vision.

With FreshBase Plus, retailers are choosing a thoroughly future-proof investment decision. Operators will enjoy smooth processes, fast response and rich functionality. Robust design and high-quality components ensure a long-life cycle, even under intensive using conditions. Powered by Mettler Toledo's proprietary AI technique, FreshBase Plus perpetually stays ahead in the market.



## High-accuracy recognition, rapid recognition speed

- High-position camera improves the recognition accuracy and speed up the step
- Adapted to various environments
- Compatible with all packaging types



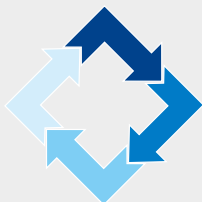
## Easy to use, improved efficiency

- Minimized workflow steps to reduce operator's fatigue
- Cross-store learning results sharing, simplifying multi-store deployment
- Equipped with a high-speed printer to complete transactions quickly
- The operators can get started immediately, saving the training time and cost



## Stable running, premium choice

- The scale provides millions of printouts, high-precision weighing and accurate touch-response under challenging conditions
- The insect-proof design for the core modules ensures operational success



## Complete ecosystem, intelligent weighing solutions

- Self-developed AI technic, unique scale software and intelligent management platform form a complete ecosystem to provide customers with a superior intelligent weighing solution

### High-resolution displays

- The capacitive touchscreen offers stepless adjustability to increase convenience for the operator. The high-resolution screen helps reduce visual fatigue.
- The large customer display ensures the best visibility and legibility. This allows promotion advertisements, which can help boost profits.



### AI solution and smart camera

- Fast and high accuracy recognition make it easier to use, completing the transaction in seconds with three steps.
- Cross-store learning results sharing simplifies the deployment in more stores expanded in a short term.
- Modular designed camera kit is easy for upgrading; less investment brings long-term use.

### Aluminum casing and stainless-steel pan

- The durable and timeless exterior design of the high-quality aluminum casing effectively prevents scratches.
- The internal core modules are protected from dirt, moisture and damage.

### High-speed printer

- The high-speed printer improves printing time per transaction through printing in seconds.
- Millions of high-quality prints ensure satisfied customer experience during peak hours in the store.
- Less printing paper replacement thanks to the large roll printing paper at 120mm diameter.

Find more information at:

► [www.mt.com/retail-FreshBase Plus](http://www.mt.com/retail-FreshBase Plus)

## FreshBase Plus

### Technical Specifications

		U2		U3
Operator Display	15.6" 1920 x 1080 px	●	-	●
	11.6" 1366 x 768 px	-	●	-
Customer Display	7"	●	●	-
	1024 x 600 px			
Camera and AI Solution		○	○	○
Max. Capacity		6kg/15kg		
Interval (e)		2g/5g		
Min. Capacity		40g		
CPU		RK3568 Quad-Core 2.0GHz		
Operating System		MT Smart OS Embedded powered by Linux		
Interfaces and Protocols		*Ethernet interface (10/100M, 1000M compatible)		
		1 x RS232 interface		
		1 x RJ11 interface		
		4 x USB 2.0 connections		
		Wireless IEEE 802.11 a/b/g/n/ac standard*		
Power Supply		100 - 240 V AC, 50 / 60 Hz		
Rated Power (W)		20	17.5	18
Max. Power (W)		106	104	105
Data Storage		2 GB LPDDR4X 16 GB eMMC		
Printer	Type	2-inch label/receipt printer		
	Print Width	56mm		
	Print Speed	up to 125mm/s		
	Print Resolution	8 dots/mm		
Package Dimension (L*W*H mm)		560x501x675		
Gross Weight (kg)		17		16.8

Remark: ● Standard; ○ Optional; - None



U2 HD

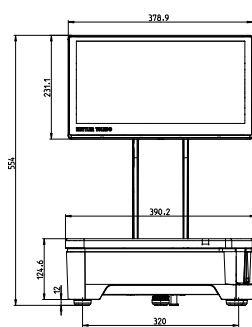
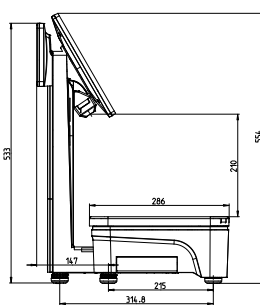


U2 GD

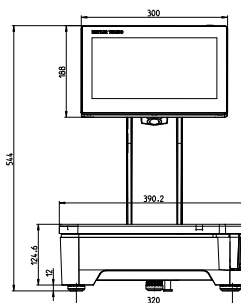


U2 side

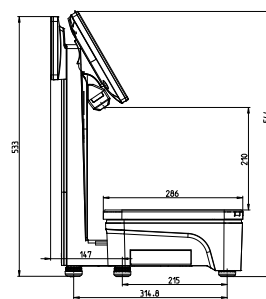
### Dimension:

U2 HD front  
U3 front

U2 HD side



U2 GD front



U2 GD side

\*All dimensions are shown in mm

\*\*Mettler-Toledo is constantly committed to improving the functionality of its products. For this reason, the technical specifications of the products are also subject to change. In such cases, no further notice will be given.

[www.mt.com/retail](http://www.mt.com/retail)

For more information



#### Mettler-Toledo AG

CH-8606 Greifensee

Switzerland

Tel. +41 44 944 22 11

Fax +41 44 944 30 60

Subject to technical changes

© 07/2025 Mettler-Toledo AG

Printed in P. R. China 2025/07